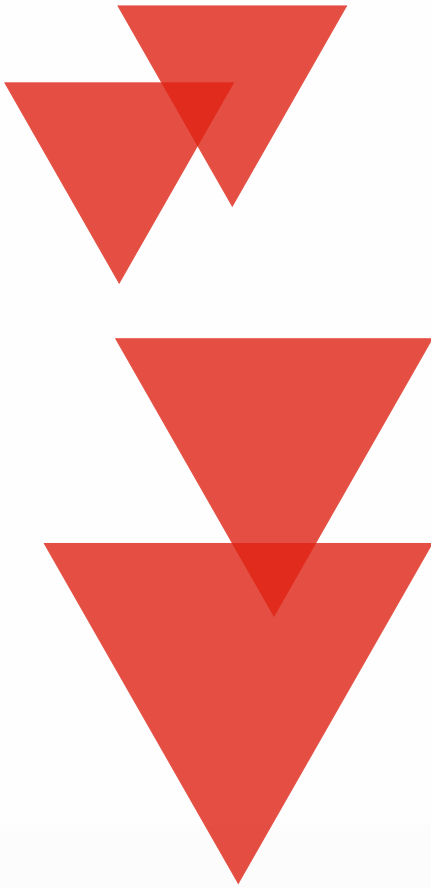




*Automne / Hiver*  
*Fall / Winter*  
2015-2016



**GATTS**  
UNIFORME



Vêtements de qualité adaptés aux professionnels de la santé. Quality apparel tailored to healthcare professionals.

Professionnalisme et performance. Professionalism and performance.

Uniforme fonctionnel aux tendances mode. Fashionable and functional design.

Tissu extensible, souple et confortable. Stretch soft and comfortable fabric.

Collection Goty inc. fabricant de vêtements depuis 1992. Spécialiste en vêtements de travail et d'uniformes, Collection Goty Inc. dessine, développe et fabrique des vêtements sous les marques de commerce enregistrées Gatts Worwear®, Gatts Jeans® et Gatts uniforme®, son expertise lui permet également de concevoir des vêtements clés en main pour des marques privées. Les vêtements Gatts sont très appréciés car ils répondent aux plus hauts critères de performance mais aussi par ses tailles ajustables qui s'ajustent aux mouvements du corps, son tissu extensible et ses coupes avantageuses. En plus d'offrir des produits de qualité, confortables, durables et performants à des prix compétitifs Collection Goty saura vous offrir un service personnalisé adapté à vos besoins.

Collection Goty inc. manufacturer of clothing since 1992. Uniform and workwear specialist, Collection Goty inc. designs and manufactures clothing under its registered brand name Gatts Workwear® Gatt Jeans® Gatts Uniform® but the company also offers you its expertise in order to produce custom clothing projects under your own private brand. Gatts highly appreciated because products meets the highest performance standard, its flexible waist adjusts to body movement, its resistant fabric and attractive fit. In addition to offering durable and comfortable quality work clothing collection Goty inc offers you good service tailored to your need.

# Table des matières / Contents



## Hauts / Tops

Uni / Solid color # 300 .....	2-3
Uni / Solid color # 320 .....	4
Imprimé / Printed # 321 .....	5-6-7



## Pantalons / Pants

Uni / Solid color # 400 .....	8
-------------------------------	---

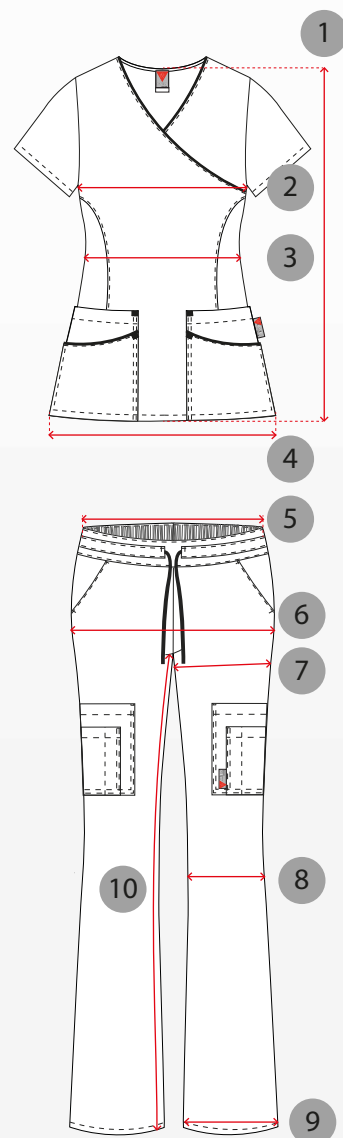


## Capri

Uni / Solid color # 200 .....	9
-------------------------------	---

# Mesures de vêtements / Spec measurement

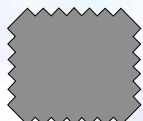
		Taille Plus							
		XXS	XS	S	M	L	XL	XXL	OS
1	Longueur dos Center back length	26 1/4	26 3/4	27 1/4	27 3/4	28 1/4	28 3/4	29 1/4	30 1/4
2	Poitrine (1" sous l'emmanchure) Chest (1" below armhole)	34 1/2	36 1/2	38 1/2	40 1/2	43 1/2	47 1/2	51 1/2	59 1/2
3	Taille (à 12" du bas) Waist (12" from bottom)	30 1/2	32 1/2	34 1/2	36 1/2	39 1/2	43 1/2	47 1/2	55 1/2
4	Largeur du bas à l'ourlet Width at the bottom	38 1/2	40 1/2	42 1/2	44 1/2	47 1/2	51 1/2	55 1/2	63 1/2
5	Tour de taille du pantalon (pas étiré) Waist circumference (not stretched)	27	29	31	33	36	39	43	51
6	Tour de hanche (à 3" de la fourche) Hip circumference (3" up crotch)	36	38	40	42	45	48	52	60
7	Tour de cuisse (à 1" de la fourche) Thigh circumference (1" below crotch)	22 1/2	23 1/2	24 1/2	25 1/2	26 1/2	27 1/2	28 1/2	30 1/2
8	Tour de genou (à 14" de la fourche) Knee circumference (14" below crotch)	15 1/2	16 1/4	17	17 3/4	18 1/2	19 1/4	20	21 1/2
9	Tour d'ourlet Hem circumference	15 5/8	16	16 3/8	16 3/4	17 1/8	17 1/2	17 7/8	18 5/8
10	Longueur d'entre-jambe Length inseam	32	32	32	32	32	32	32	32





Grandeur / Size: 2XS - XS - S - M - L - XL - 2XL

#300 (Uni / Solid color)



GRIS / GREY



MARINE / NAVY

Tissu Extensible  
Stretch Fabric:

62% Polyester  
35% Coton / Cotton  
3% Spandex

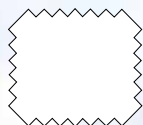


**Bientôt disponible**  
**Available soon**  
**Over size Taille Plus**  
**Gris / Grey**



Grandeur / Size: 2XS - XS - S - M - L - XL - 2XL

#300 (Uni / Solid color)



BLANC / WHITE

Tissu Extensible  
Stretch Fabric:

62% Polyester  
35% Coton / Cotton  
3% Spandex



**Bientôt disponible**  
**Available soon**  
**Over size Taille Plus**  
**Gris / Grey**

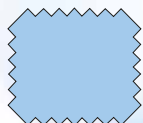






Grandeur / Size: 2XS - XS - S - M - L - XL - 2XL

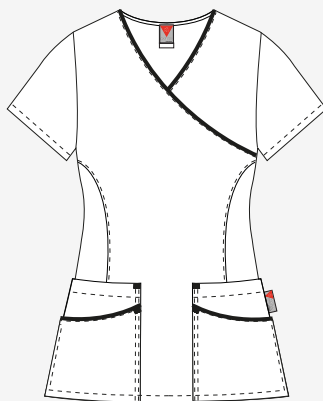
#320 (Uni / Solid color)



BLEU CIEL / SKY BLUE

Tissu Extensible  
Stretch Fabric:

62% Polyester  
35% Coton / Cotton  
3% Spandex



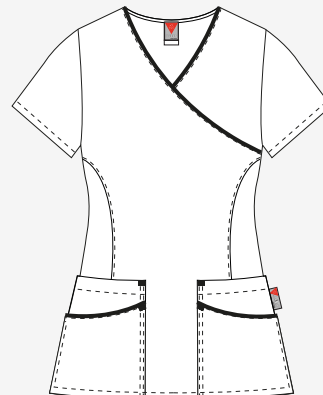


Grandeur / Size: 2XS - XS - S - M - L - XL - 2XL

#321 (Imprimé / Printed)

Tissu Extensible  
Stretch Fabric:

62% Polyester  
35% Coton / Cotton  
3% Spandex



# 850 - Blue



# 850 - Grey

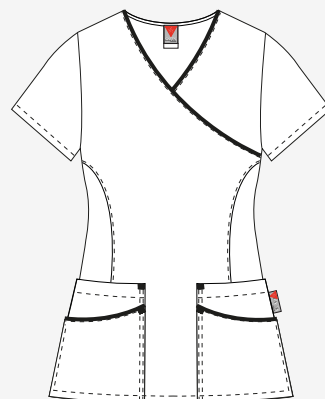


Grandeur / Size: 2XS - XS - S - M - L - XL - 2XL

#321 (Imprimé / Printed)

Tissu Extensible  
Stretch Fabric:

62% Polyester  
35% Coton / Cotton  
3% Spandex



# 134 - Flowers



# 739 - Abstrait - Sky Blue



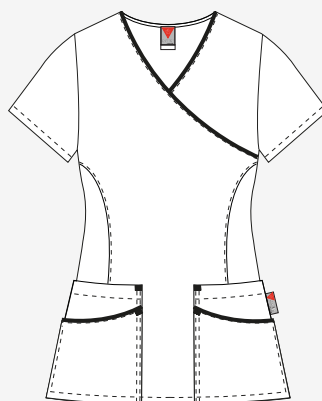


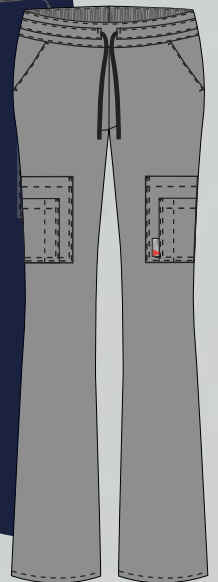
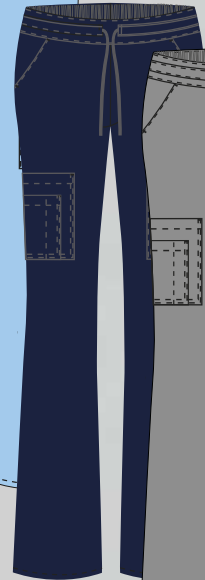
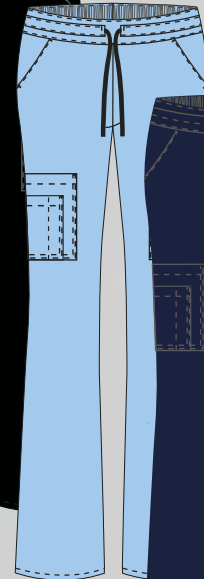
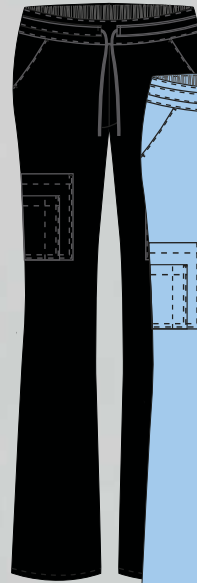
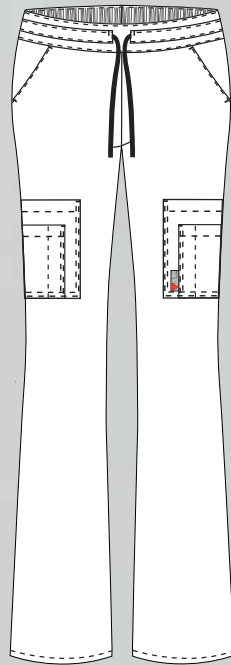
Grandeur / Size: 2XS - XS - S - M - L - XL - 2XL

#321 (Imprimé / Printed)

Tissu Extensible  
Stretch Fabric:

62% Polyester  
35% Coton / Cotton  
3% Spandex



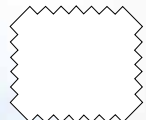


Grandeur / Size: 2XS - XS - S - M - L - XL - 2XL

#400 (Pantalon / Pant)



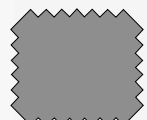
NOIR / BLACK



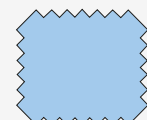
BLANC / WHITE



MARINE / NAVY



GRIS / GREY

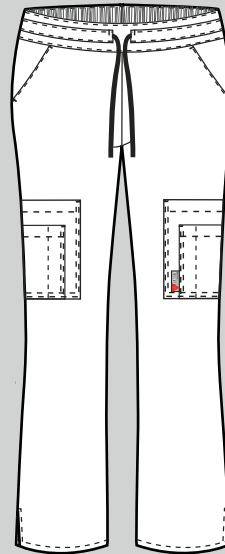


BLEU CIEL / SKY BLUE

**Bientôt disponible**  
**Available soon**  
Over size Taille Plus  
Blanc / White  
Gris / Grey

Tissu Extensible  
Stretch Fabric:

62% Polyester  
35% Coton / Cotton  
3% Spandex

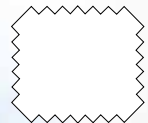


Grandeur / Size: 2XS - XS - S - M - L - XL - 2XL

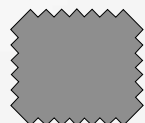
**#200 (Capri)**



NOIR / BLACK



BLANC / WHITE



GRIS / GREY

Tissu Extensible  
Stretch Fabric:

62% Polyester  
35% Coton / Cotton  
3% Spandex



**GATTS<sup>®</sup>**  
**UNIFORME**

[www.collectiongoty.com](http://www.collectiongoty.com)

430, rue de l'Amiante, Asbestos (Québec) J1T 4S3  
T: 819 879-7098 SF: 1 800 808-7098 F: 819 879-6382

[commande@collectiongoty.com](mailto:commande@collectiongoty.com)

